

0.3% Municipal  
Taxable Income  
Tax Levy

May 7, 2019 Ballot

City of Sidney





# Expiring Income Tax

- 0.25% municipal taxable income tax expires this year.
- 0.3% would not begin until 2020.
- Does not tax Social Security, pensions, investments, disability, or interest income.
- More than 1/2 paid by those who live outside



# Existing & Future Needs

- Providing high-quality emergency medical response and fire protection for all residents.
- Completing needed repairs, repaving, and maintenance of Sidney streets citywide.



# Meeting Identified Needs

- Revenue from the 0.3% is specifically restricted to city road work and the fire department – including the construction, operation, and maintenance of a third fire station:
  - 50% for Roads
  - 50% for Fire Department



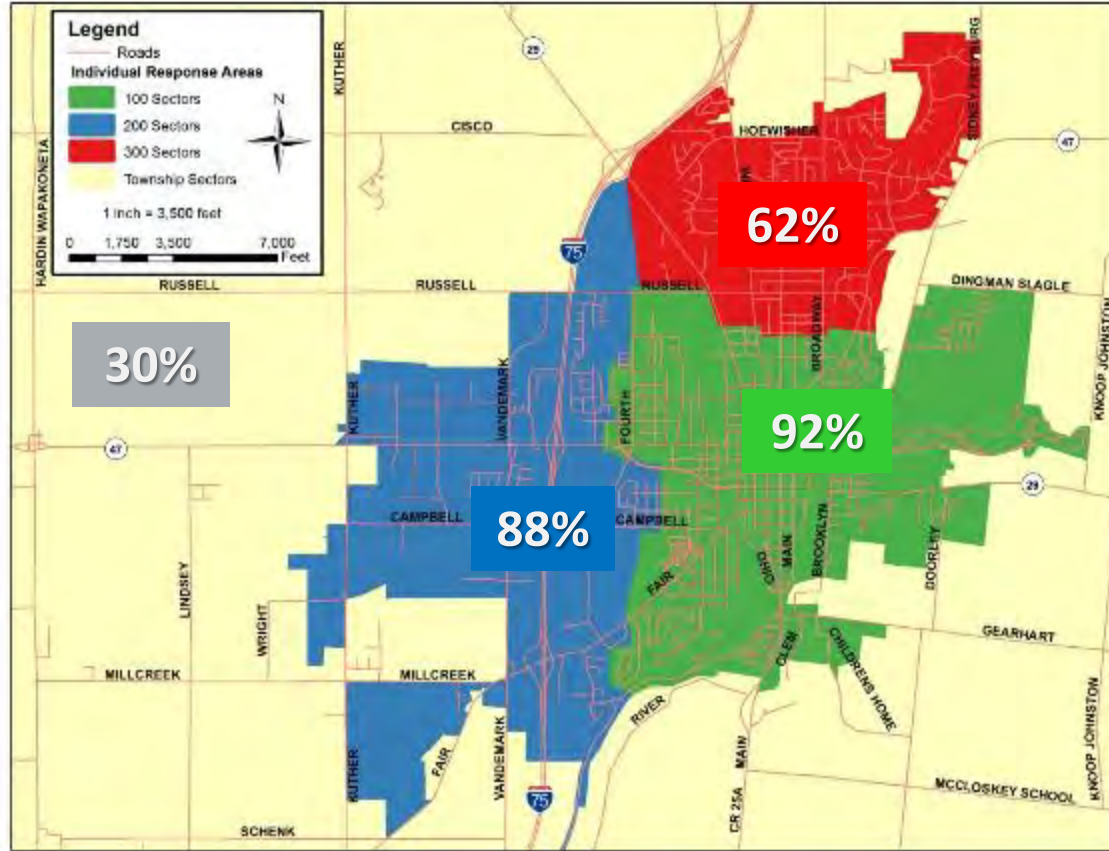


# Fire Station Needs Analysis:

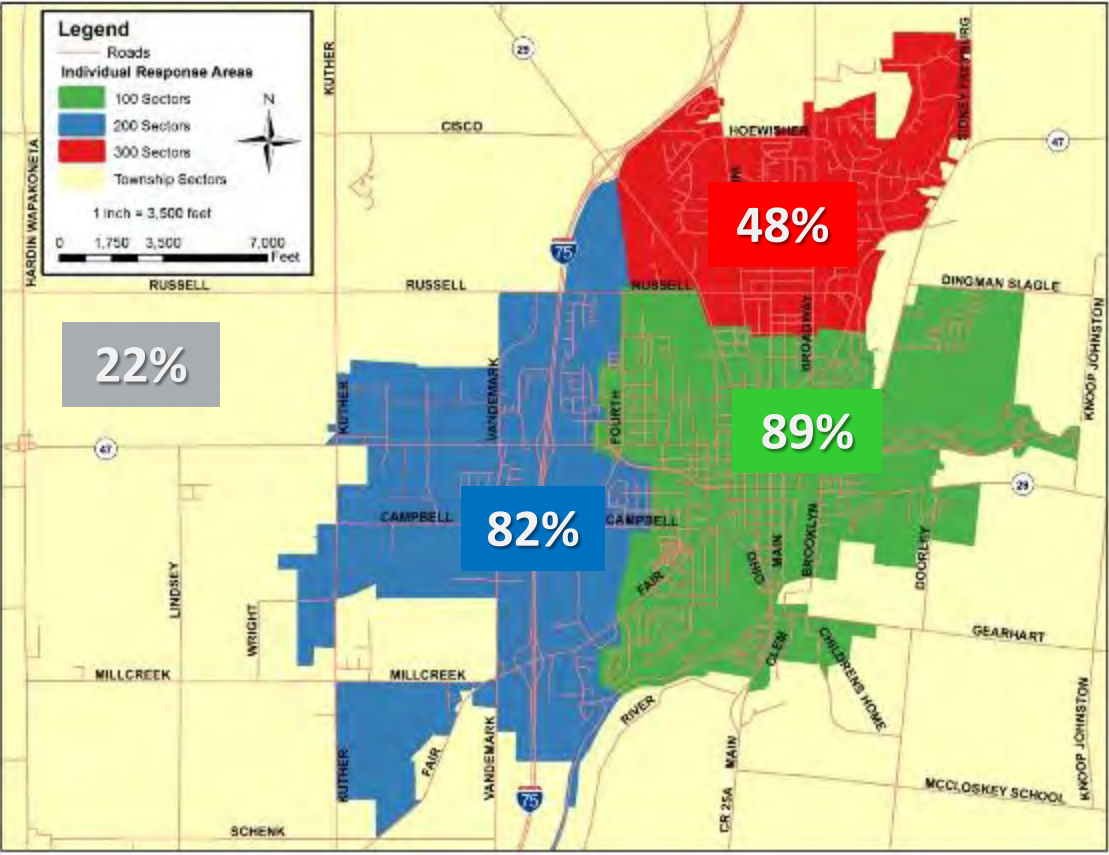
- Emergency call volume at historic highs (39.5% increase since 2010).
- Currently average more than 11 calls per day.
- City showing growth in northern regions.
- 2009 & 2014 Community Risk Assessment revealed need for a third station.



# 2018 SFD Response Times <6½ minutes



# 2018 SFD EMS Response Times <6 minutes





Fire Station Site Plan



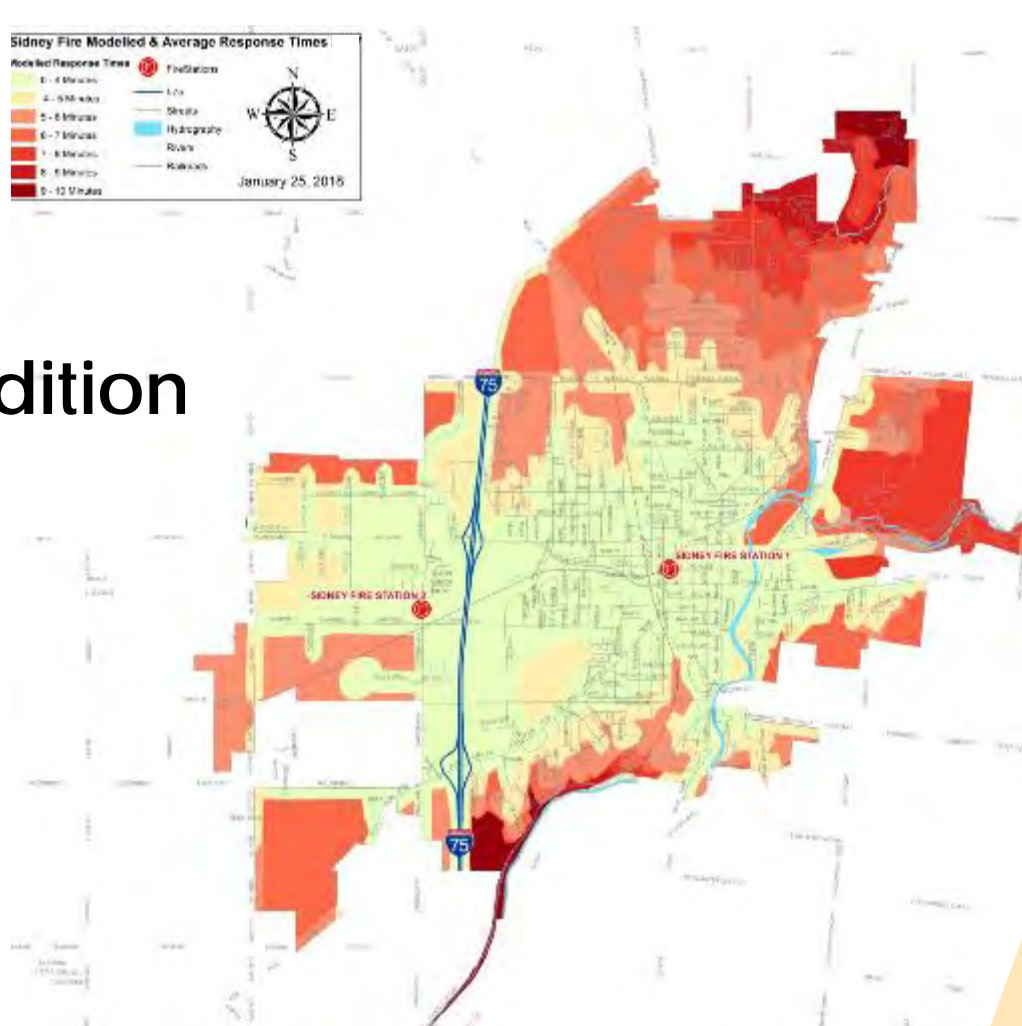
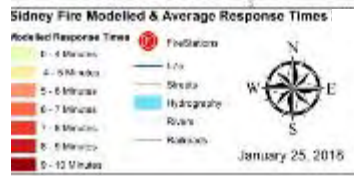


View from Wapakoneta Ave.



# Response Time Map:

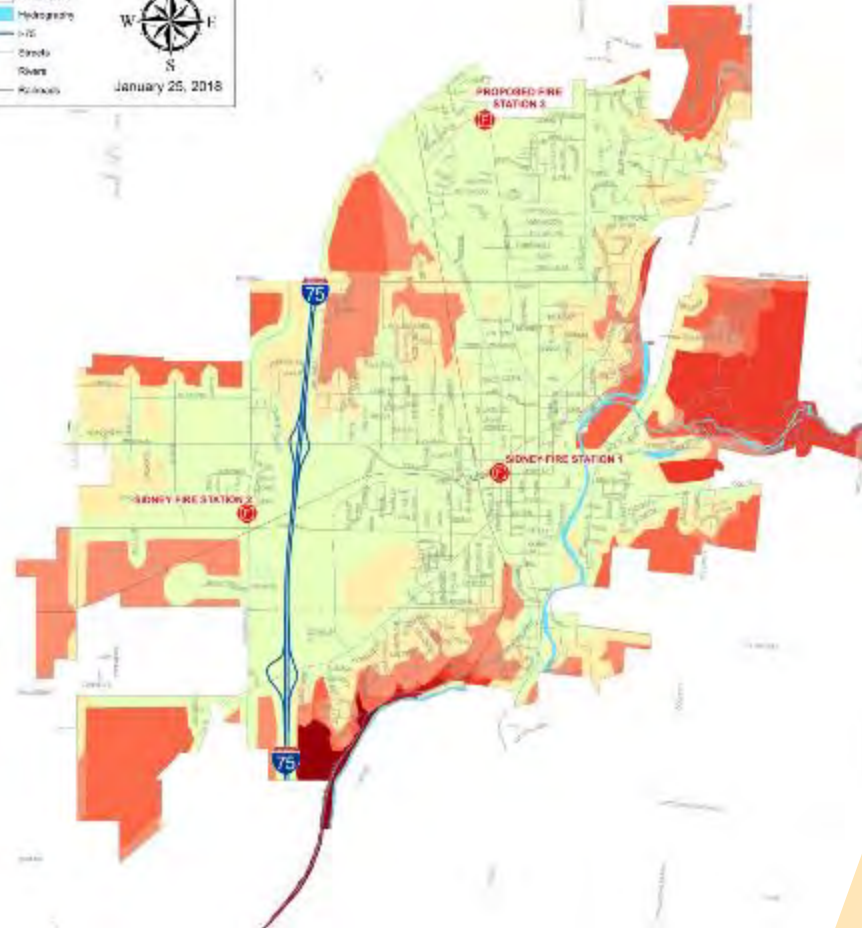
## Current Condition





# Response Time Map:

## After Station #3 Construction

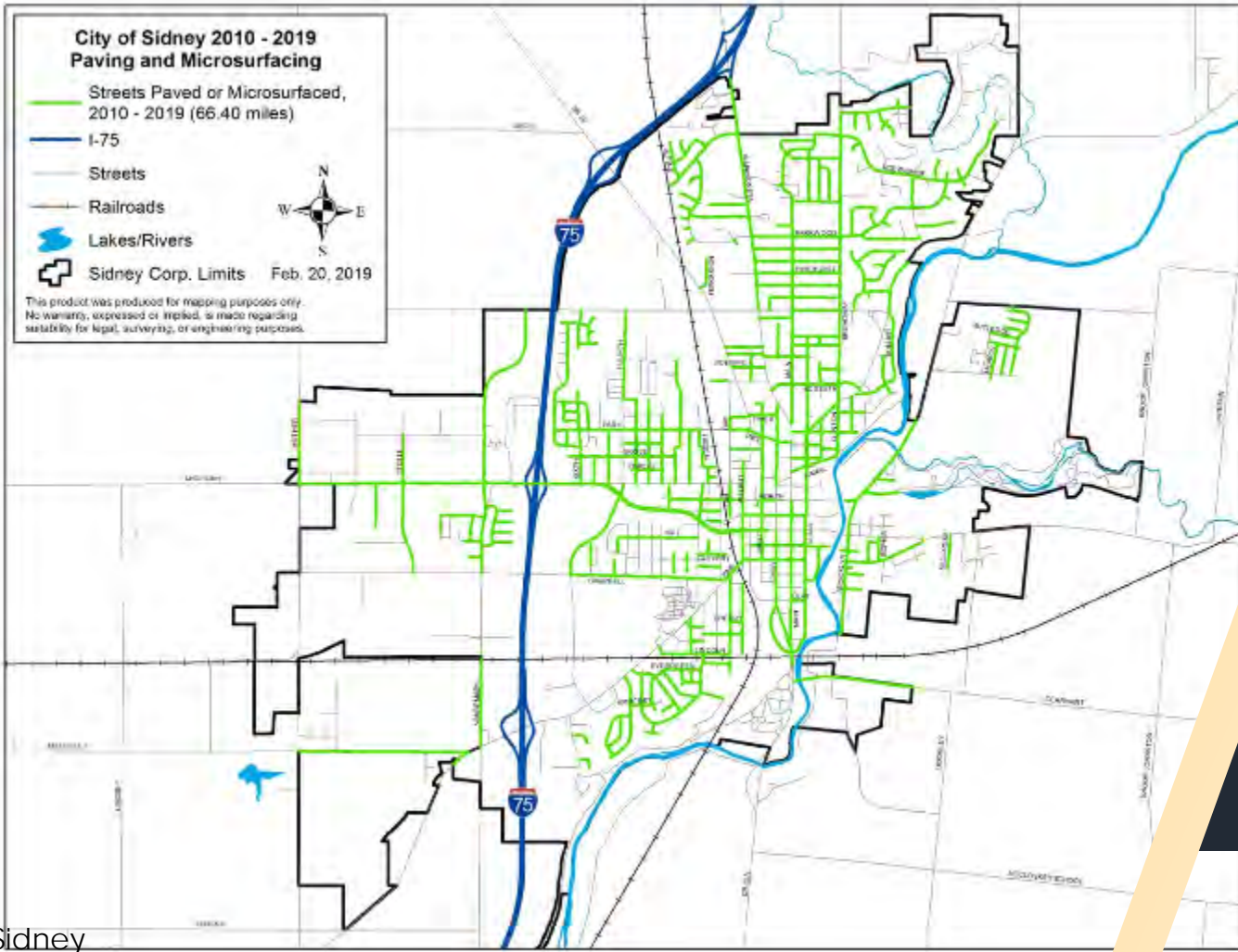


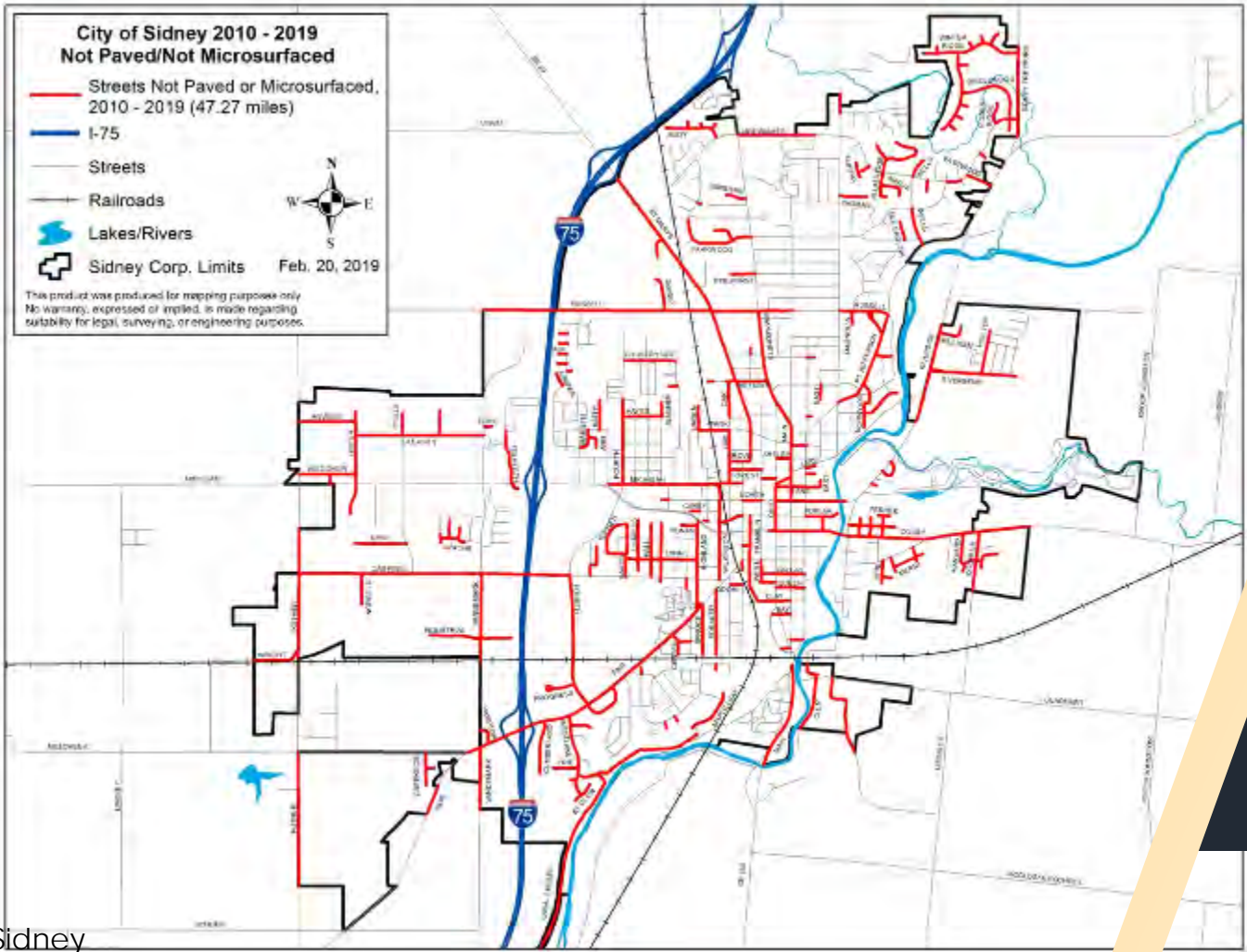


# Sidney Roads

- Since 2010, nearly 70 miles of city roads (about 60%) have been paved or micro-surfaced with the help of the expiring income tax.

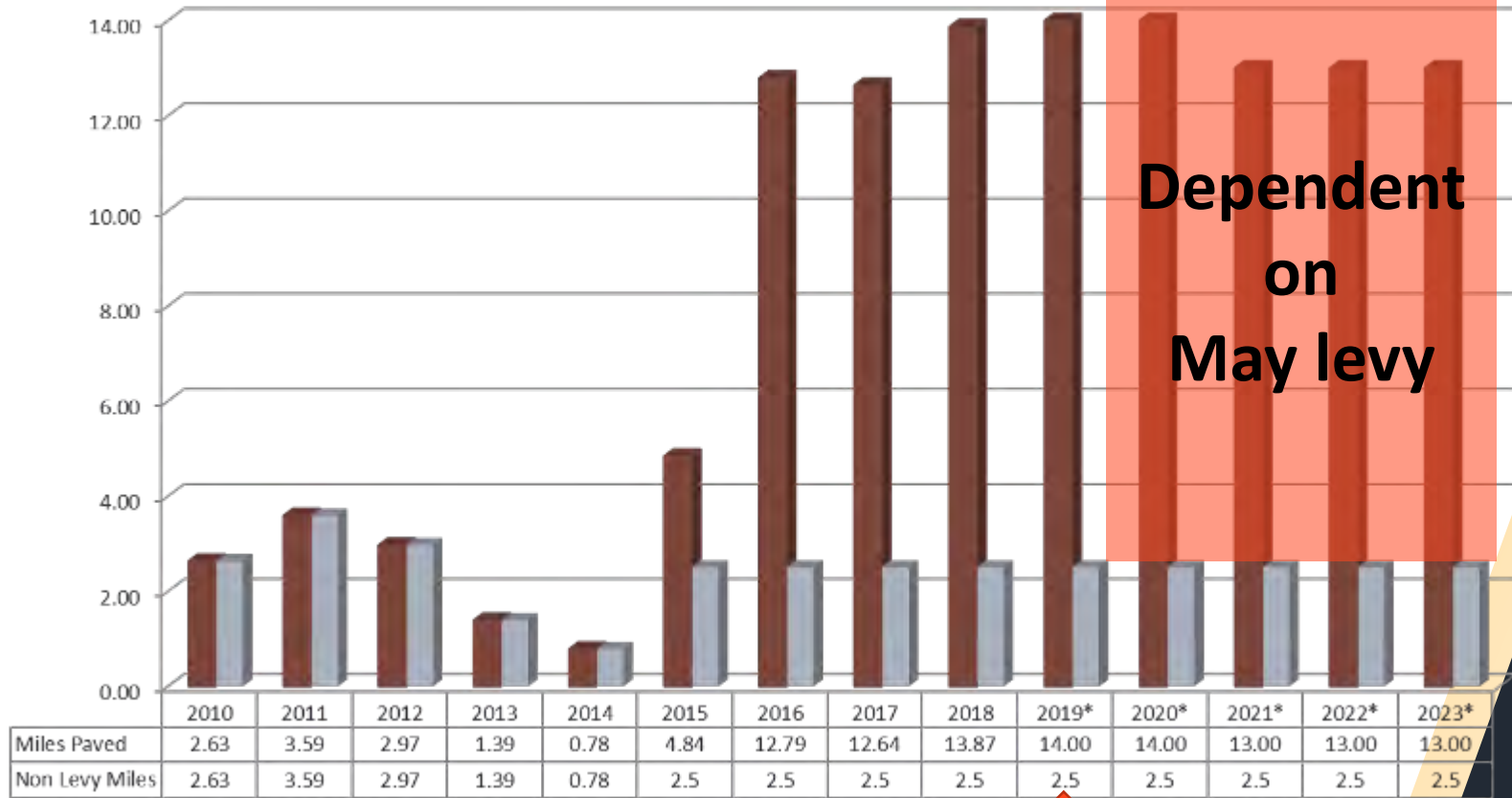








# Miles Resurfaced Per Year



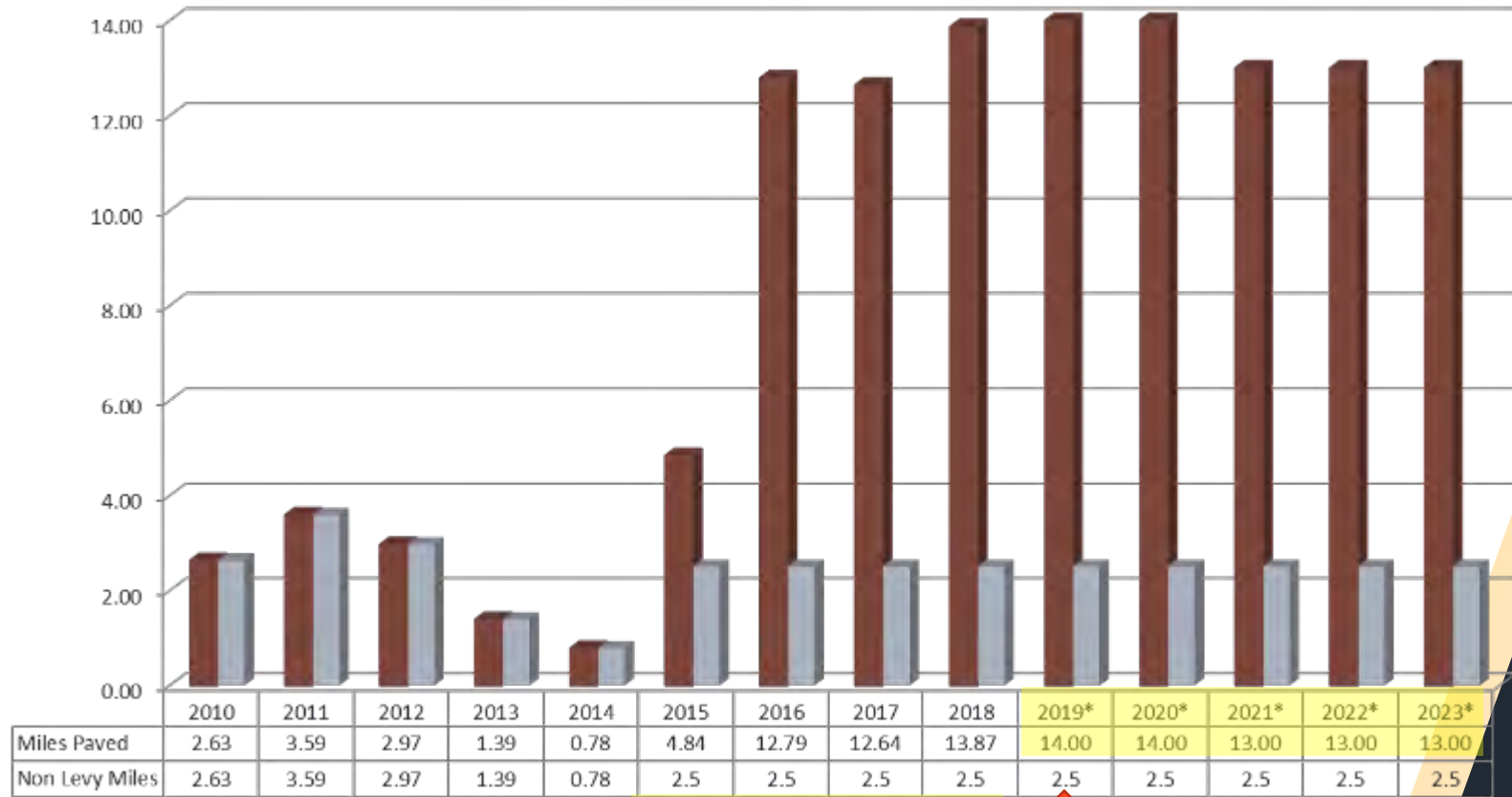
**Dependent  
on  
May levy**

\* Projected Amounts if Levy Passes





# Miles Resurfaced Per Year



\* Projected Amounts if Levy Passes







# 0.3% Municipal Taxable Income Tax Levy

May 7, 2019 Ballot.  
Early voting begins April 9.

City of Sidney

