

HISTORY OF TAWAWA PARK

Tawawa Park was established May 24, 1948 under the guidance of the Tawawa Civic Park Trustees. The park was named after Tawawa Creek, which runs through the park. The original members of this group were, Cecil Watkins, William Milligan, Murray A. Ferguson, W.E. Whipp, J. Oliver Amos, Wayne Bertsch, and Jerome Wagner. These civic-minded citizens wished to establish a park and recreational playground for the use and benefit of the citizens of Sidney, Ohio. The park consists of 220 wooded acres which includes two lakes (Tawawa and Amos). Tawawa Park was deeded to the City of Sidney on March 28, 1956. It was dedicated to Sidney area citizens on June 3, 1956. Tawawa Park is located at 12 Tawawa Drive. After the "Big Four" Railroad was relocated in the early 1920's the abandoned railroad bed became a popular hiking trail, especially to the lake to fish and to Big Rock. Walking along the tow path of the canal was also a favorite in the spring and fall of the year. The Kah family owned the land and there was much speculation that the Kah family had plans to develop the land for housing which caused concern to many who thought the highest and best use for the land would be a park for the community. (1)

Shortly after World War II ended the Kah family put the land up for sale for \$15,000. In order to secure the land for a park, William Milligan made a list of 15 people (all of whom have areas in the park named for them) whom he thought he could get a thousand dollars from each and then purchase the land. It was his thought to get control of the land first, and then put together a plan for its development. Milligan's first "ask" was to Wendal Whipp, President of Monarch Machine Tool Company. After hearing Milligan's idea Whipp wrote a check for the \$15,000 and said, "Bill, go buy the land and then go to the others for their money and let's get this project started." And he did. (1)

- continued on back

In the early development of the park, the Park Board wanted to open up the canal for canoeing, which meant an outlet for the water was necessary. The original Sidney Electric Company building on Brooklyn Avenue was (and still is) standing. It had housed an electric generator which originally had been powered by overflow water from the canal. Work began to open the canal and outlet the water through the abandoned electric generating building. However, in the winter of 1948 during a January thaw there was a heavy rain that saturated the high bank along SR 47 (Riverside Drive) which breached and flooded the Brunner filling station on the north side of the road. A long law suit ensued, during which time all work on the park was suspended. The jury agreed that the breach was an act of God and not caused by the Park Board, and so work was continued. The original idea was abandoned and the canal was filled in from Tawawa Lake to the highway and an outlet was installed under the road bed to Tawawa Creek.

(1) Contribution from Patrick Milligan

Vehicle Hours of Operation:

The area of the park east of the Whipp Road gate, for approved motor vehicles, shall open and close as follows:

November 1 - Third Friday of April	NOT OPEN TO MOTOR VEHICLES
Third Saturday of April - First Friday in June.....	10 a.m. - 7 p.m.
First Saturday in June - Labor Day.....	10 a.m. - 8 p.m.
Day after Labor Day - September 30	10 a.m. - 7 p.m.
October 1 - October 31.....	10 a.m. - 6 p.m.



Scan the code to
visit our website.

Shelter Reservations

937-498-8155 or
parks@sidneyoh.com

Parks and Recreation Office

415 S. Vandemark Rd., Sidney
sidneyoh.com

**Call the parks office to report any issues in
the parks. If an emergency, please call 911.**

TAWAWA PARK

Trail Map and Information



CITY OF SIDNEY
PARKS
AND RECREATION
Learn. Play. Grow.

TAWAWA PARK

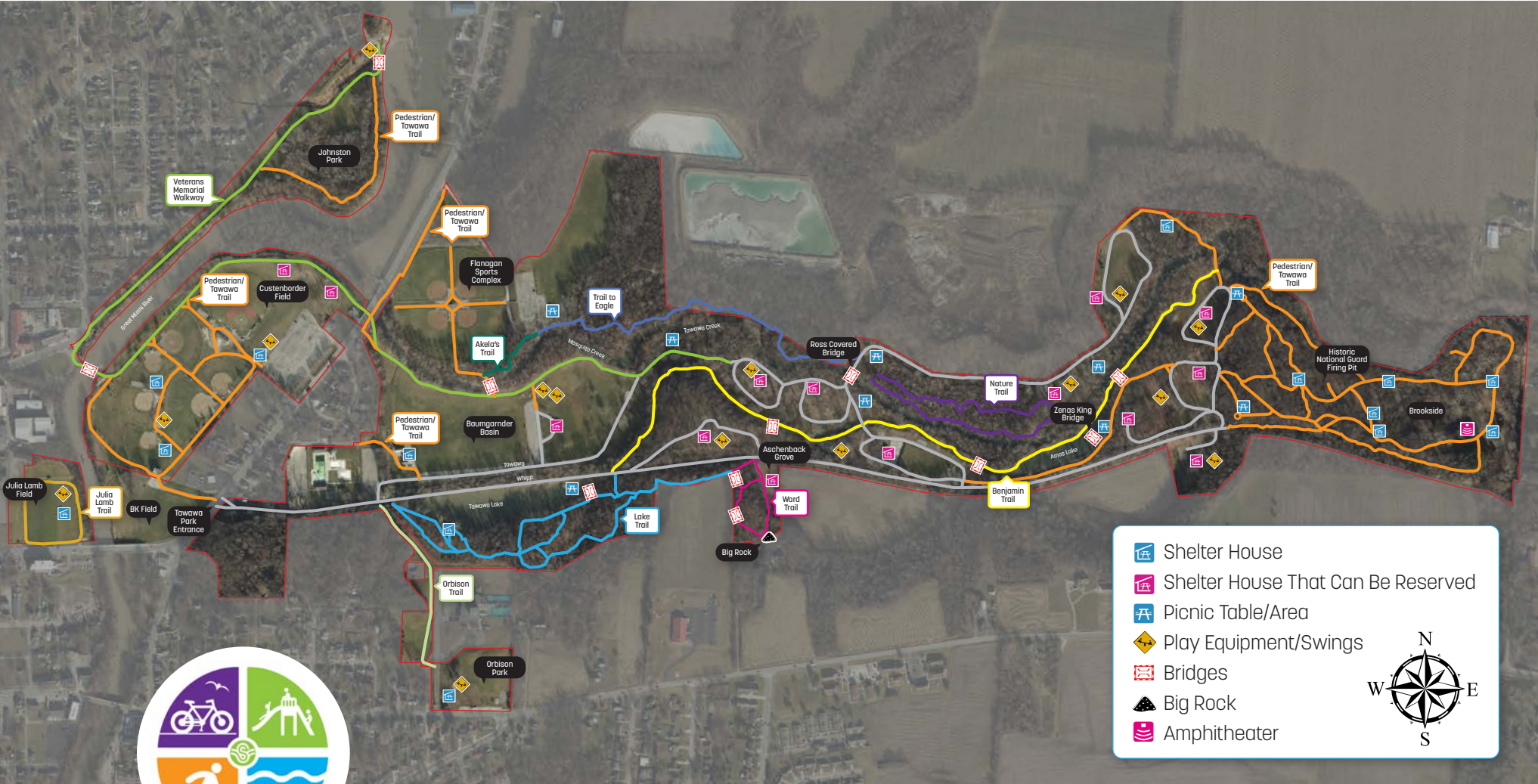
Sidney, Ohio

Trail Etiquette

- Be respectful and alert
- Stay to the right, pass on the left
- Give audible warnings
- Obey all trail and road signs
- Pull off the trail when stopped
- Use safe speeds, slow down in congested areas
- Leash and clean up after pets
- No unauthorized motorized vehicles

Hours Open to Pedestrian Traffic:

Third Saturday of April - First Friday in June.....7 a.m. - 8 p.m.
 First Saturday in June - Labor Day.....7 a.m. - 9 p.m.
 Day after Labor Day - October 31.....7 a.m. - 7 p.m.
 November 1 - Third Saturday in April.....7 a.m. - 5 p.m.



Trail Map

Trail Legend

- Julia Lamb - (.25 Miles)
- Nature Trail - (.53 Miles)
- Akela's Trail - (.09 Miles)
- Benjamin Trail - (.97 Miles)
- Pedestrian/Tawawa Trail - (4.5 Miles)
- Orbison Trail - (.22 Miles)

- Trail to Eagle - (.5 Miles)
- Veterans Memorial Walkway - (1.5 Miles)
- Ward Trail - (1.5 Miles)
- Lake Trail - (1.5 Miles)
- Roads
- Tawawa Park Perimeter

