

0.3% Municipal
Taxable Income
Tax Levy

May 7, 2019 Ballot

City of Sidney





Expiring Income Tax

- 0.25% municipal taxable income tax expires this year.
- 0.3% would not begin until 2020.
- Does not tax Social Security, pensions, investments, disability, or interest income.
- More than 1/2 paid by those who live outside



Existing & Future Needs

- Providing high-quality emergency medical response and fire protection for all residents.
- Completing needed repairs, repaving, and maintenance of Sidney streets citywide.





Meeting Identified Needs

- Revenue from the 0.3% is specifically restricted to city road work and the fire department – including the construction, operation, and maintenance of a third fire station:
 - 50% for Roads
 - 50% for Fire Department



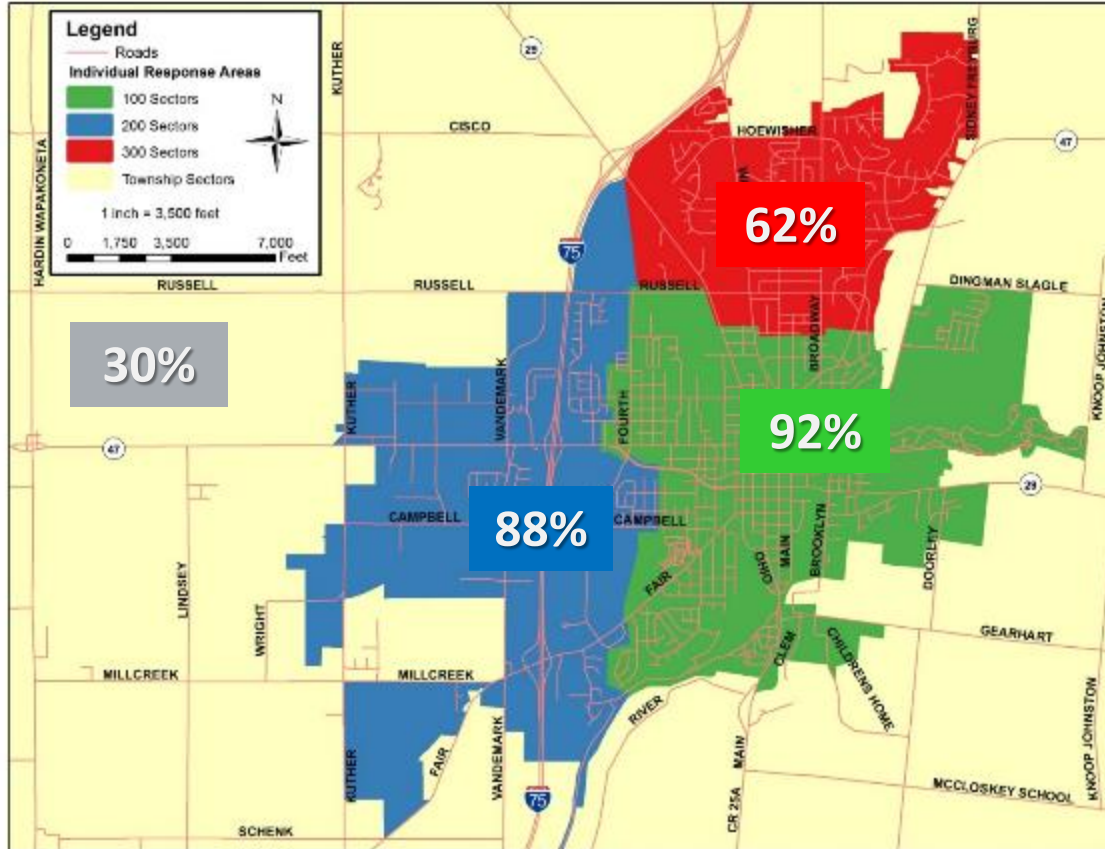
A background image showing firefighters in full gear working at a fire scene. The scene is filled with bright orange and yellow flames and thick smoke. The firefighters are silhouetted against the bright light of the fire. One firefighter is in the foreground on the left, and another is on the right. The overall atmosphere is one of intense emergency response.

Fire Station Needs Analysis:

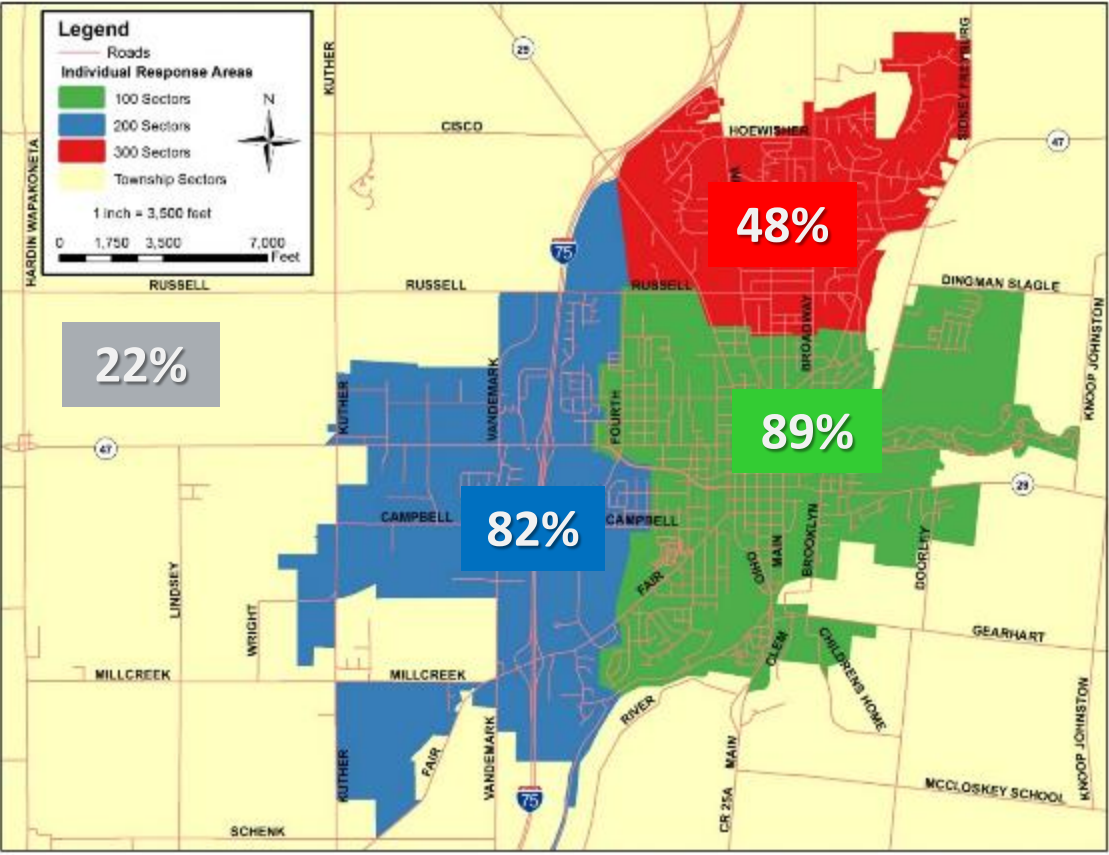
- Emergency call volume at historic highs (39.5% increase since 2010).
- Currently average more than 11 calls per day.
- City showing growth in northern regions.
- 2009 & 2014 Community Risk Assessment revealed need for a third station.

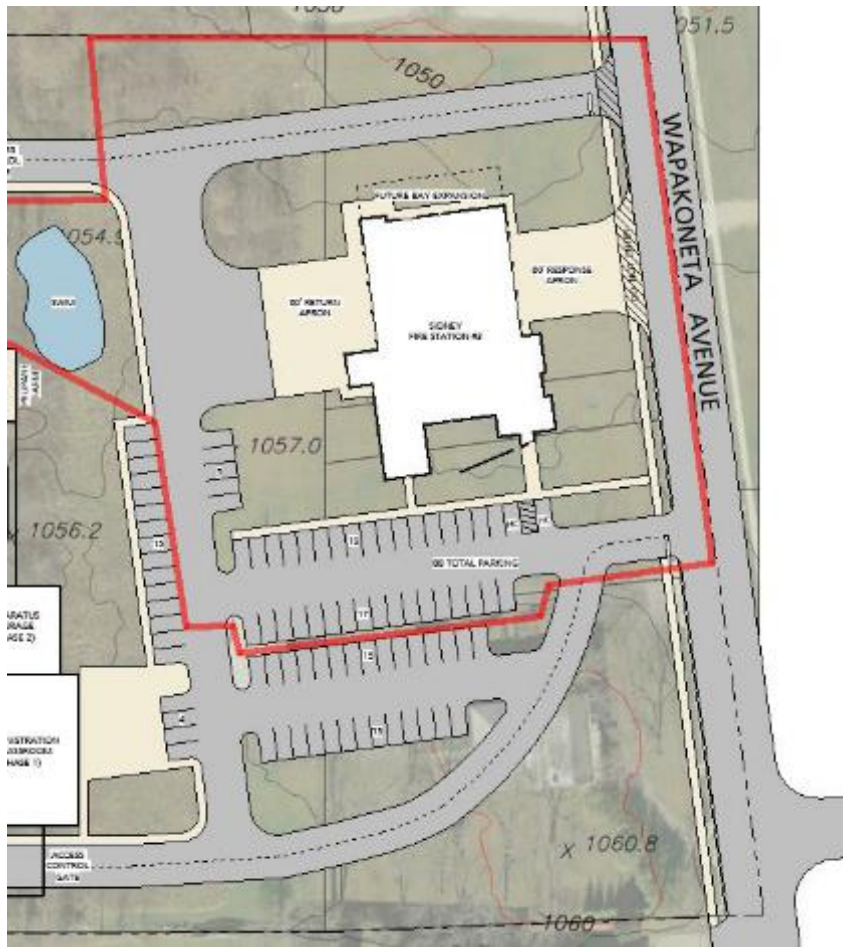


2018 SFD Response Times <6½ minutes



2018 SFD EMS Response Times <6 minutes





Fire Station Site Plan



City of Sidney



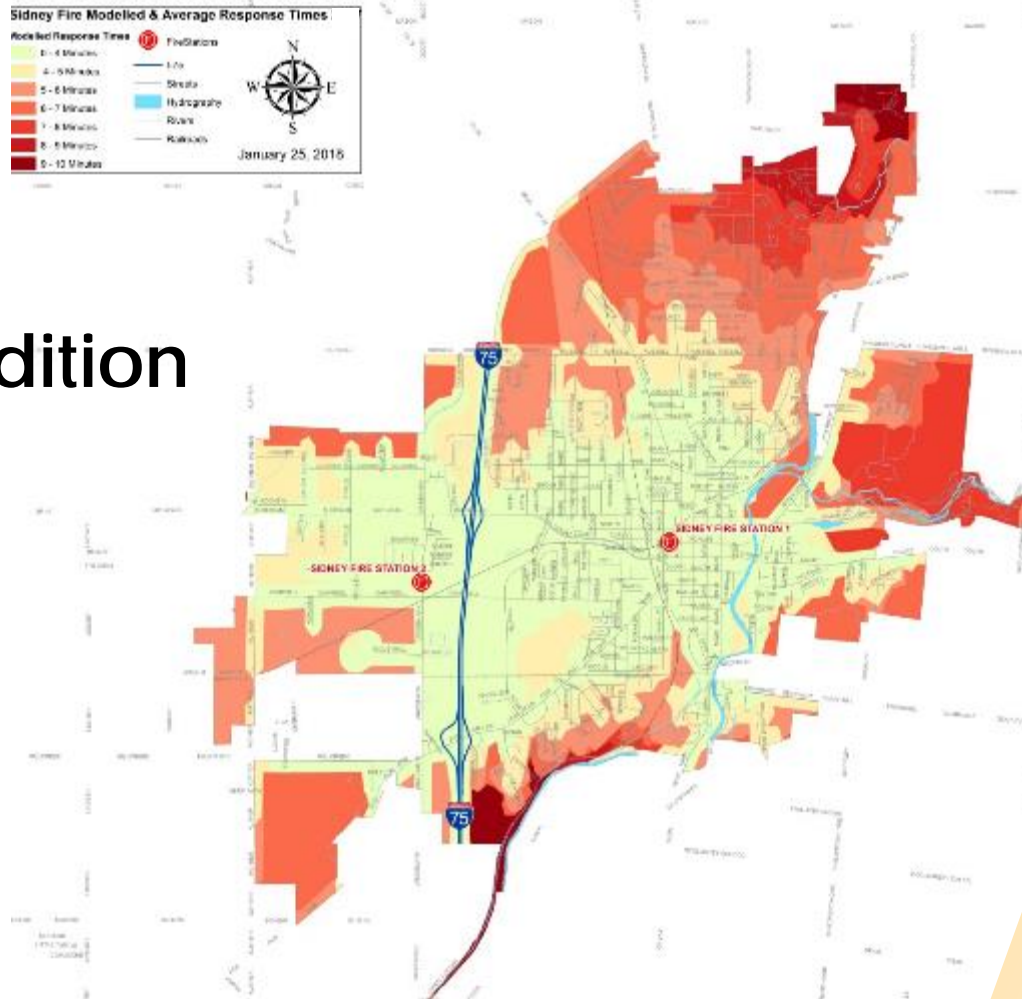
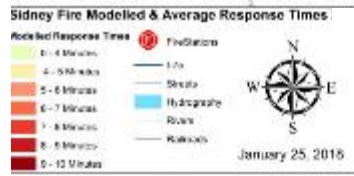


View from Wapakoneta Ave.



Response Time Map:

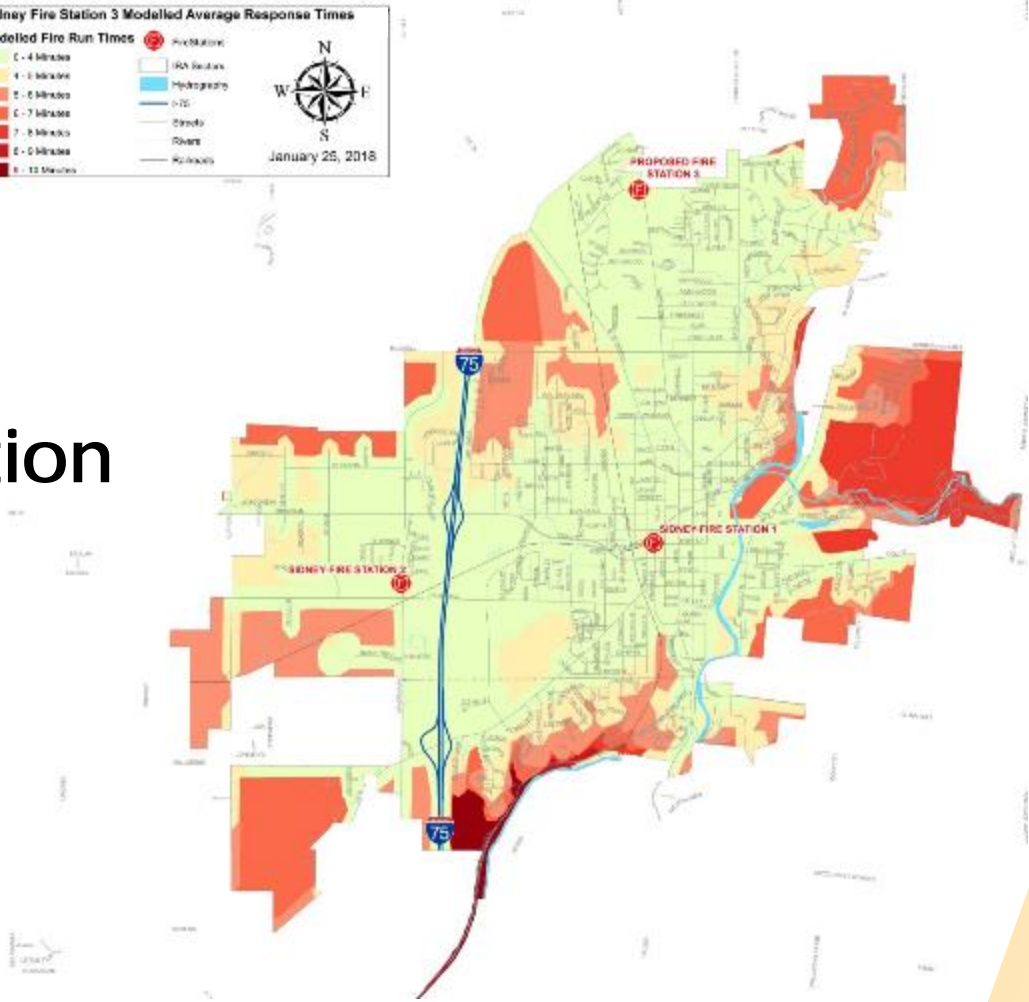
Current Condition





Response Time Map:

After Station #3 Construction

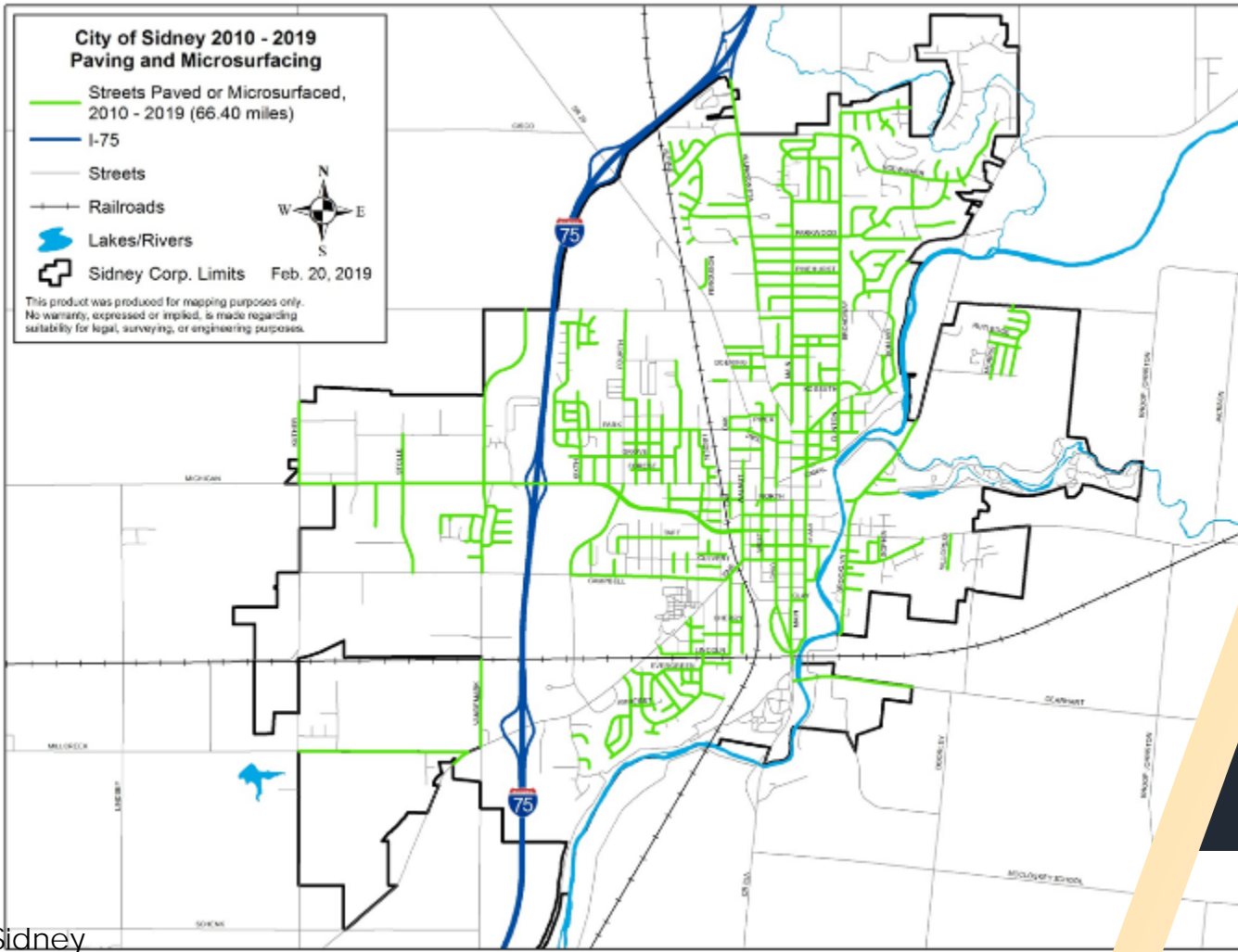


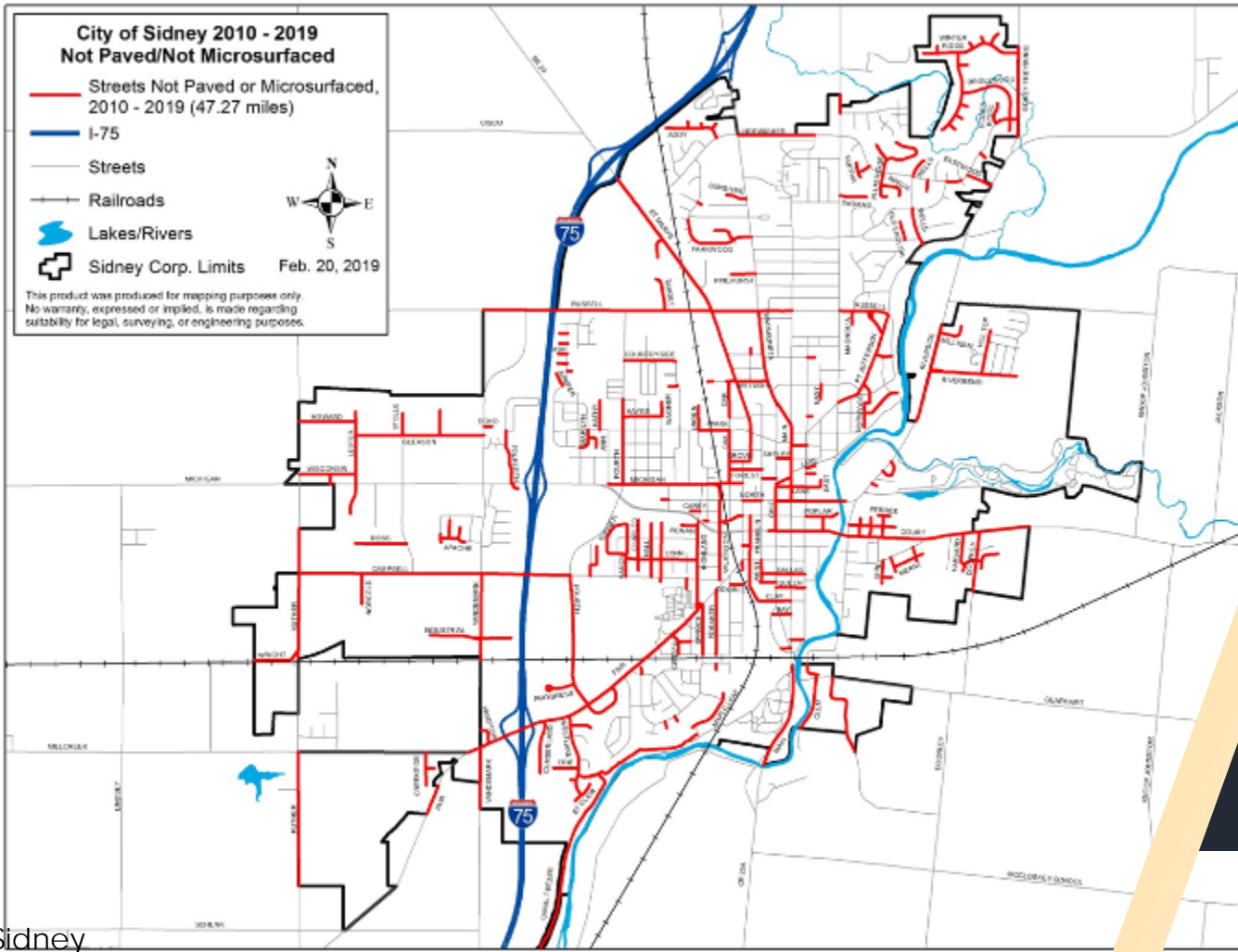


Sidney Roads

- Since 2010, nearly 70 miles of city roads (about 60%) have been paved or micro-surfaced with the help of the expiring income tax.

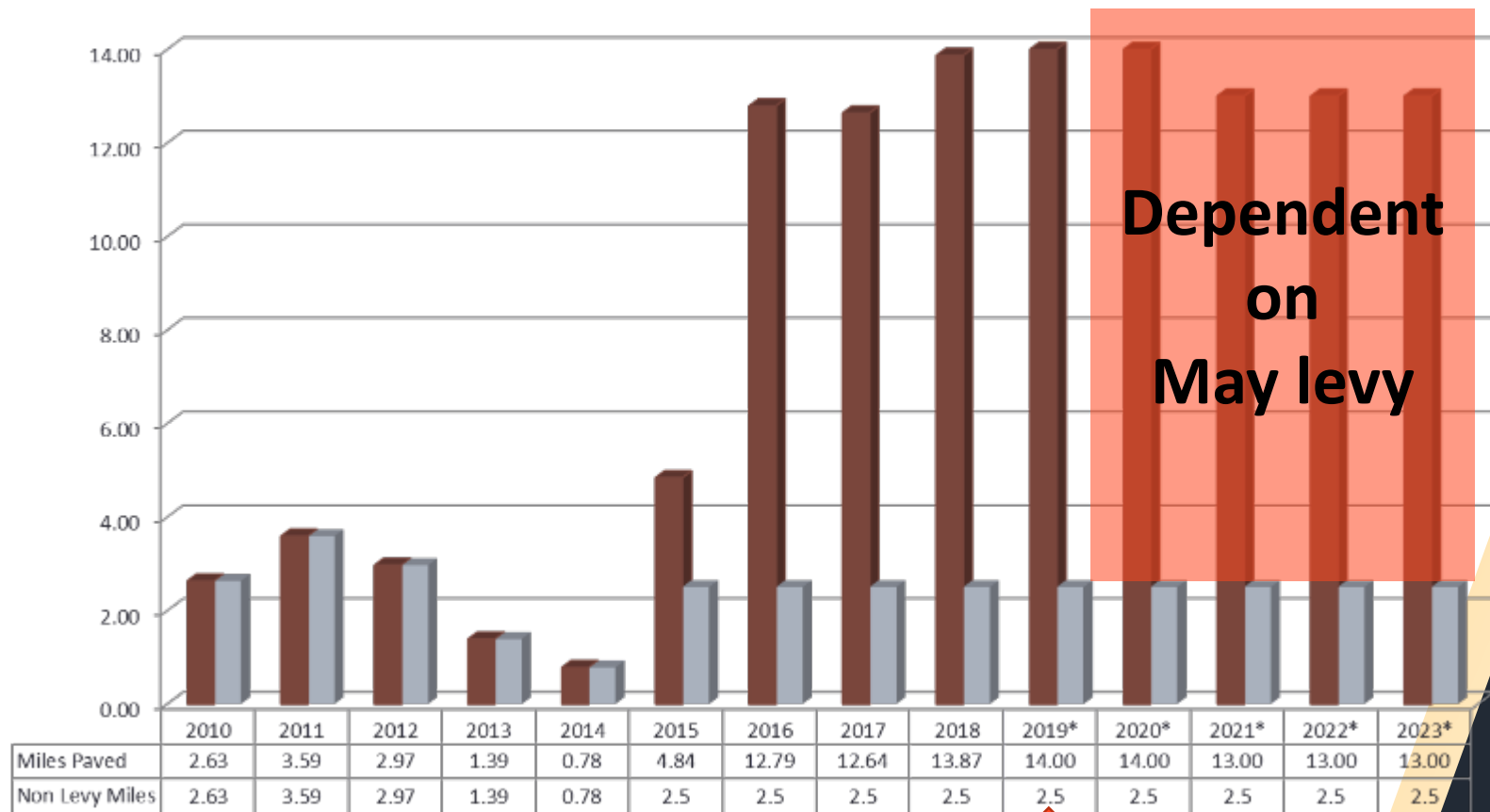








Miles Resurfaced Per Year

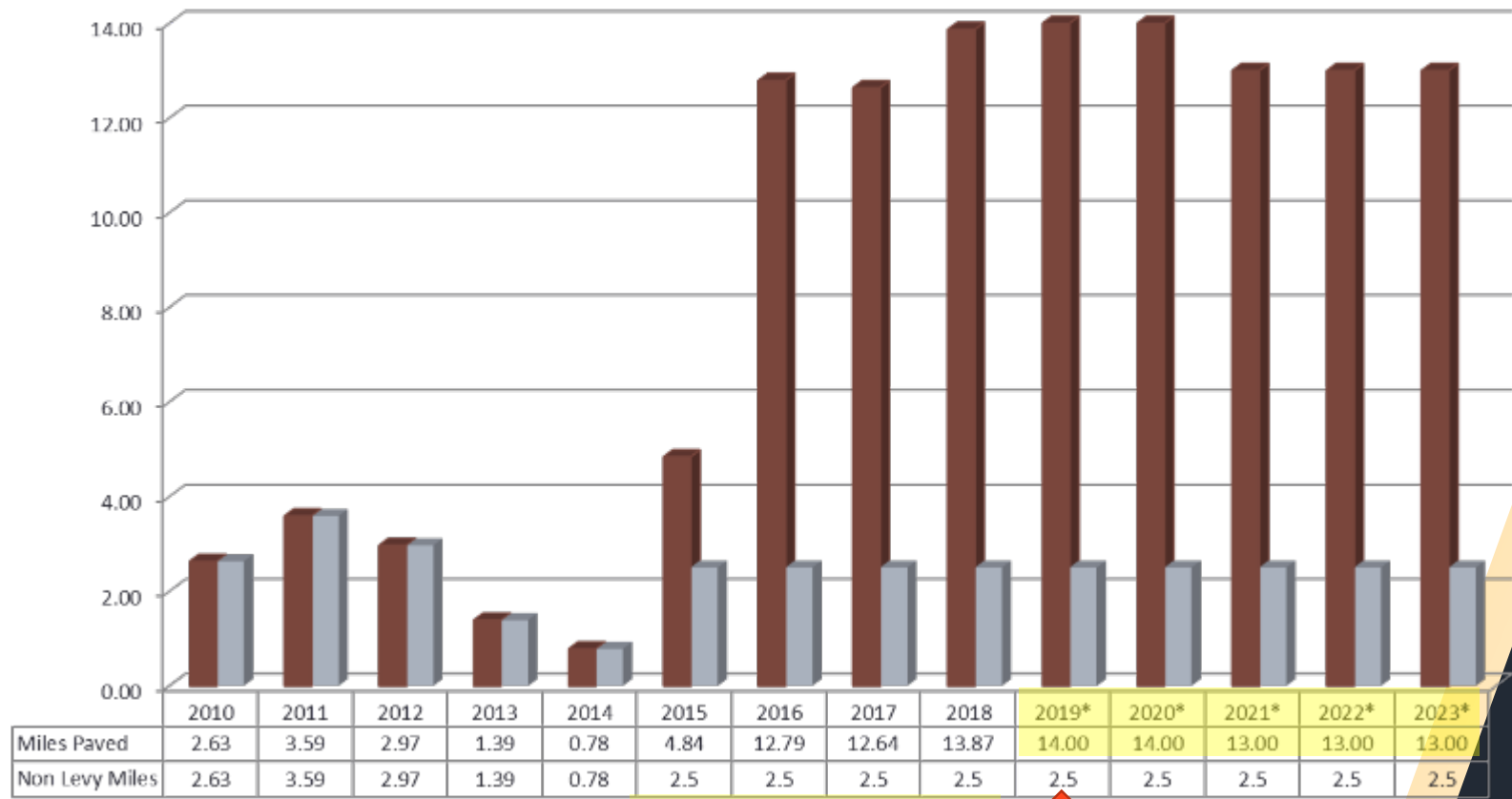


* Projected Amounts if Levy Passes





Miles Resurfaced Per Year



* Projected Amounts if Levy Passes





0.3% Municipal Taxable Income Tax Levy

May 7, 2019 Ballot.
Early voting begins April 9.

City of Sidney

