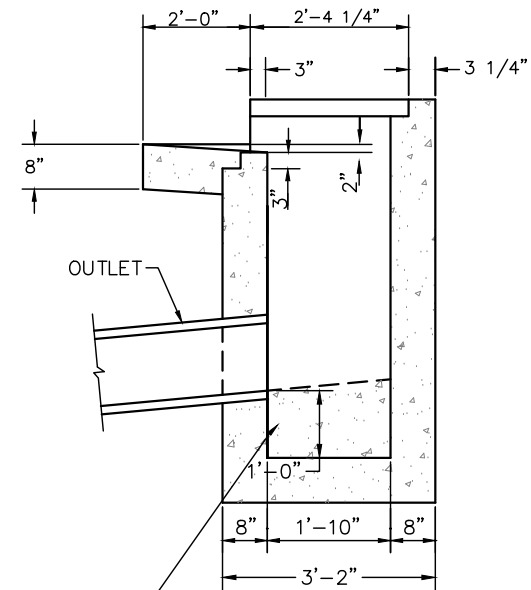
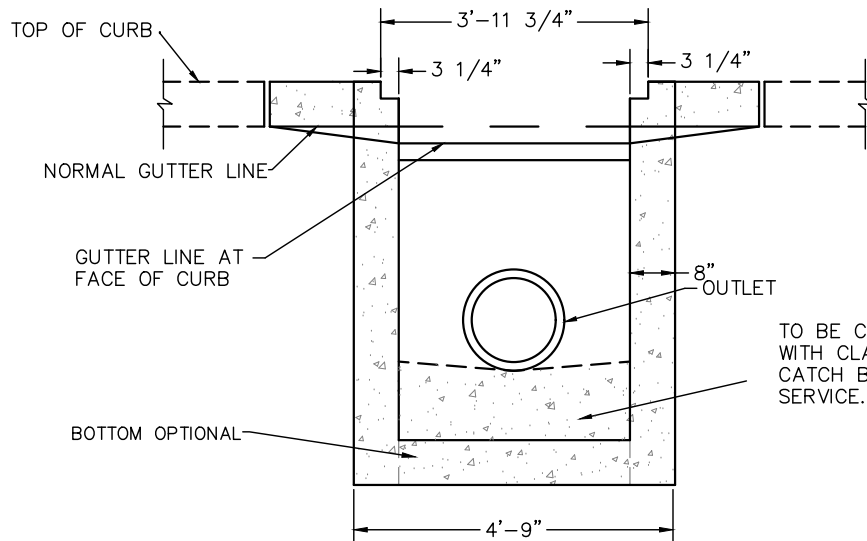


**PLAN
(WITH FRAME AND LID REMOVED)**



SECTION B-B



SECTION A-A

TO BE CLEANED AND FILLED WITH CLASS "C" CONCRETE BEFORE CATCH BASIN IS PUT INTO SERVICE.

NOTES:

- A. CURBS ALONG APRON TO HAVE VERTICAL FACE AND BE MONOLITHIC WITH APRON.
- B. FRAME AND LID SHALL BE NEENAH CATALOG No. R-3312-A OR EQUIVALENT.
- C. CATCH BASIN MAY BE PRECAST UNIT OR POURED IN PLACE.
- D. PRECAST UNITS SHALL HAVE MINIMUM WALL THICKNESS OF 5".
- E. PRECAST UNITS SHALL BE DURA-CRETE CB-915-A OR AN APPROVED EQUAL.
- F. ALL CATCH BASINS SHALL BE PLACED ON A 6" APPROVED AGGREGATE BASE WITH PRECAST BOTTOM.
- G. BOTTOM TO BE CONTOURED TO PROVIDE POSITIVE DRAINAGE. THE SLOPE TO BE DETERMINED BY THE ENGINEER.
- H. THE FRONT EDGE OF CATCH BASIN LID FRAME TO BE FLUSH WITH THE EDGE OF ROLL CURB AND FLUSH WITH FACE OF BARRIER CURB.



**TYPE A CATCH BASIN 'IN KIND' FOR REPAIR-MAINTENANCE
ONLY AS DIRECTED BY THE CITY**

REVISIONS:	DATE APPROVED: 06/03/2020
	PAGE No. 600-4