

NOTES

A. OUTSIDE METER PITS ARE REQUIRED, METERS SHALL NOT BE INSTALLED INSIDE WITHOUT WRITTEN PERMISSION FROM THE UTILITIES DIRECTOR.

B. CITY APPROVED METER PIT, SEE APPROVED LIST TO DETERMINE CORRECT APPLICATION AND ADDITIONAL REQUIREMENTS.

C. METER PIT TO BE LOCATED AS DIRECTED BY THE CITY.

D. METER PIT AND METER PROVIDED BY CITY AND PAID FOR THROUGH TAPPING FEE.

E. UNSATISFACTORY INSTALLATION WILL RESULT IN WATER NOT BEING TURNED ON.

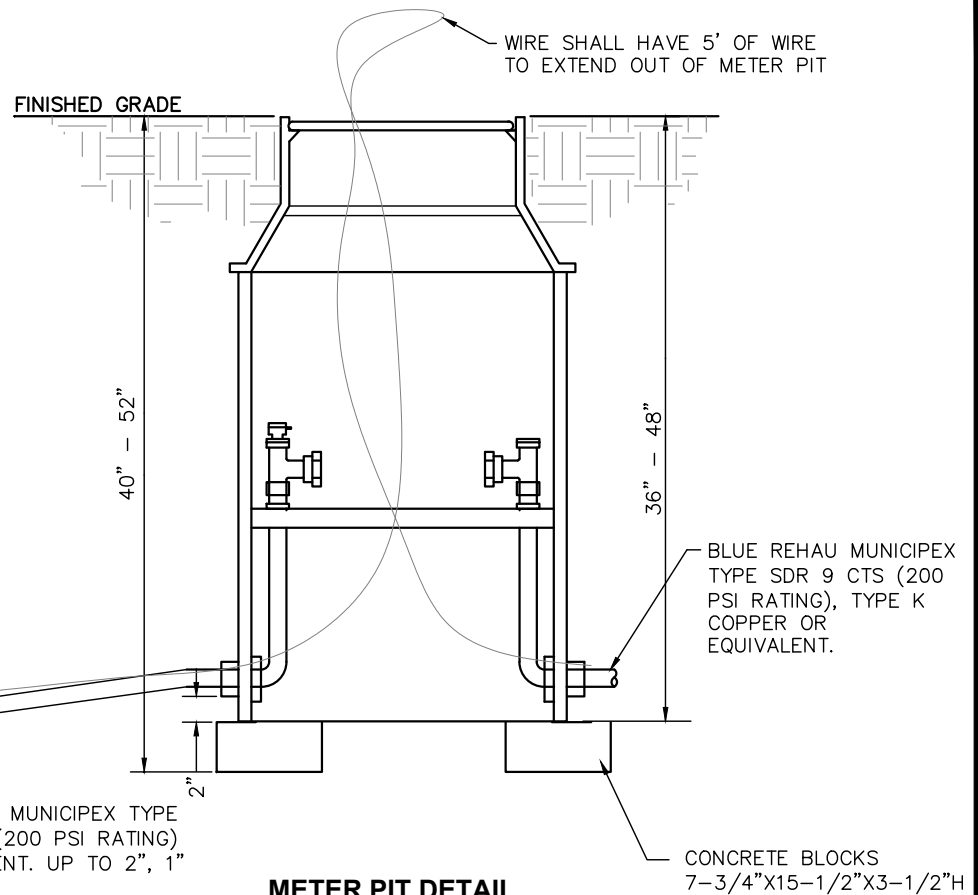
F. METER PIT LID MUST BE FLUSH OR 1" BELOW FINISHED GRADE. IF FRAME OF METER LID IS SHOWING, POSSIBILITY OF FREEZING OF METERS AND SERVICE LINES IS INCREASED. CITY'S RESPONSIBILITY STOPS AT THE FIRST SHUT-OFF VALVE.

G. MULLER CORPORATION STOPS OR ANY OTHER CORPORATION STOPS ARE NOT CONSIDERED EQUIVALENT TO FORD F-1000 TAPS, UNLESS APPROVED BY THE UTILITIES DIRECTOR.

H. BLUE 12ga COPPERHEAD HS REINFORCED TRACER WIRE MANUFACTURED BY COPPERHEAD INDUSTRIES, LLC. CONNECTORS SHALL BE LOCKING BLUE "SNAKEBITE" CORROSION PROOF WIRE CONNECTORS MANUFACTURED BY COPPERHEAD INDUSTRIES, LLC.

SADDLE SHALL BE FORD FC101 OR MUELLER DR1S OR APPROVED EQUIVALENT, WITH CC THREADS

CORPORATION STOP TAPPED INTO MAIN AT 45° FORD F-1000 TAP TO BE MADE UNDER PRESSURE WITH ACCEPTABLE TAPPING MACHINE.

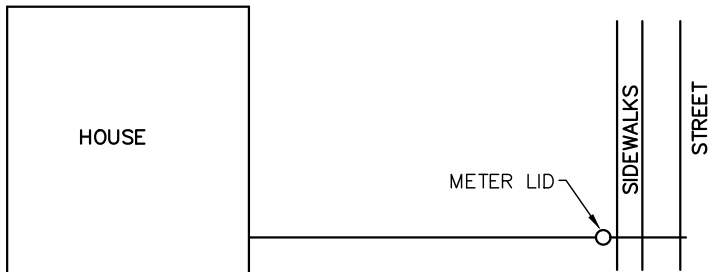


METER PIT DETAIL

CONTACT UNDERGROUND UTILITIES DEPARTMENT FOR A LIST OF APPROVED METER ASSEMBLIES.

ELECTRICAL SYSTEM GROUND SHOULD BE INSPECTED AND VERIFIED TO BE ADEQUATE IF USING NON-CONDUCTIVE PIPE FOR WATER SERVICE AND/OR WHEN REPLACING AN EXISTING WATER SERVICE. CONTACT CITY'S BUILDING INSPECTOR FOR ADDITIONAL INFORMATION.

K-COPPER TO BE INSTALLED INSIDE THE METER PIT.



WATER MAIN SERVICE CONNECTION-METER PITS

REVISIONS:	DATE APPROVED:
	06/03/2020
	PAGE No.
	800-8